

Stitch 93 – Cluster flowers

The changes are as follows but as it affects the chart I've also reproduced the corrected chart (below).

Row 1: K2, [yo, k1, yo, k3] three times, yo, k1, yo, **k1 k2**; rep from * **to last st, k1 end.**

Row 3: Should read as row 15.

Row 4: P2, p2togtbl, p9, *p2tog, p3, p2togtbl, p9, rep from * to last st, **p1 4 sts, p2tog, p2.**

Row 6: Should read as row 18.

Stitch 99 – Double garter stitch

I think the stitch works but needs clarification. When row 2 is worked for the first time, at the end of row there is a final, loose loop which is not a stitch and can be dropped. On subsequent rows all stitches should be an even length. First stitch is a single strand followed by a pair of threads for each stitch. This should keep the numbering correct.

Stitch 17 - Diamonds

Agreed. Photograph shows WS of swatch. Replacement image to follow.

Stitch 34 – Diagonal brioche

I agree that there is an error here but I think the stitch multiple is incorrect. If worked as 2 sts plus 3 (ie, cast on must have an odd number of sts) the pattern works. The set up row increases the number of sts, then the sts increase by one in row 3, and decrease by one in row 5.

Cast on 25 sts

Set-up row 1 (worked once only): 36 sts

Row 2: 36 sts

Row 3: 37 sts

Row 4: 37 sts

Row 5: 36 sts

Rows 2-5 are then repeated

Stitch 43 – Little crown stitch

The twist occurs as part of the stitch so no specific twist should be needed.

Stitch 58 – Simple lacy rib

Agreed. Photograph is incorrect although the stitch pattern works as set. Correct image to follow.

Stitch 62 Feather Lace

Row 3: This row should be correct, however, as you say, a change is needed to row 7 as follows:

Row 7: ~~K1, *~~ k2tog, ***[k1,yo, k1]** twice, **k1, sk2p, sl1 wyib**; rep from * to last 5 stitches, [k1, yo] twice, **k1** k2togtbl, ~~k1~~.

Stitch 83 – Puff stitch

Agreed. Row 6 should read p4tog.

Stitch 90 – Cocoon

Agreed. The abbreviation MT should have 'turn' at the end.

Stitch 91 – Tassel

Agreed. Abbreviation for Mb (make bobble) should read:

[(K1, yo) twice, k1] in next st, turn, p5, turn, k5, turn, ~~p5~~, p2tog, p1, p2tog, turn, sl1, k2tog, pssso.

Stitch 92 – Twin leaf (abbreviation 9 into 7 cluster)

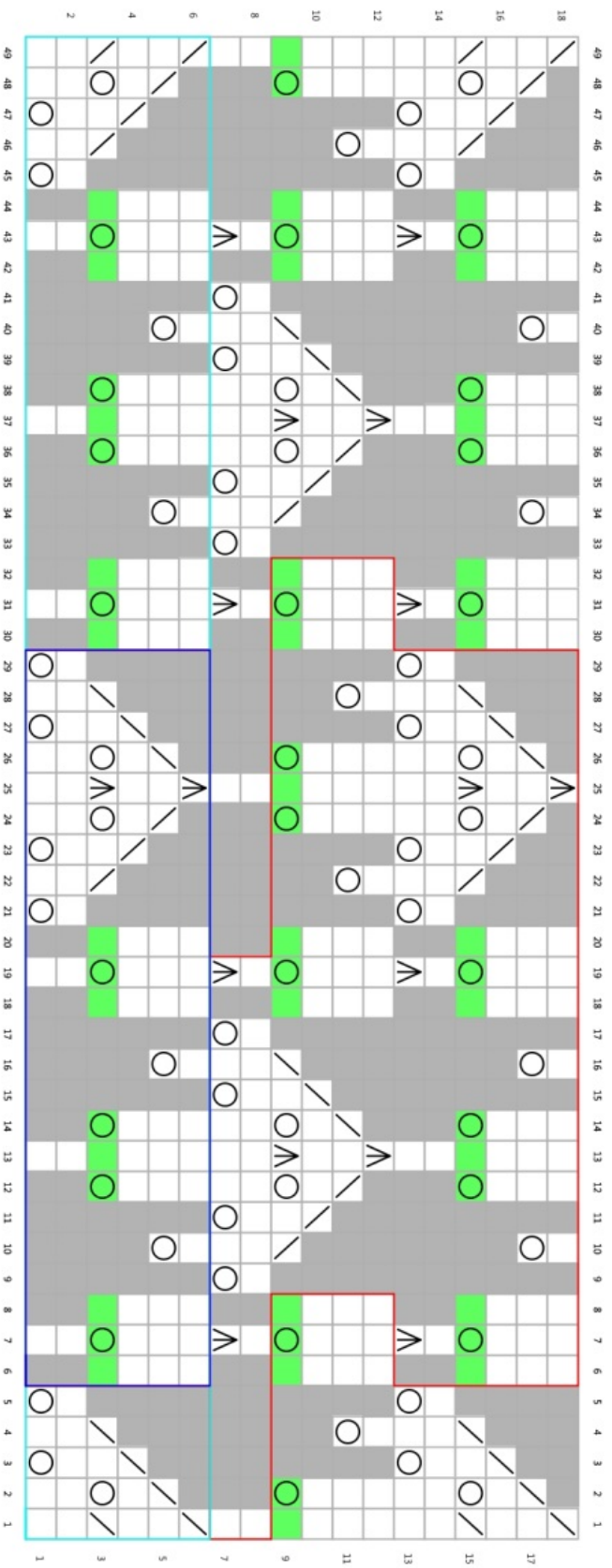
As it stands the cluster is technically correct, however, it is difficult to work the first k7tog so I've adapted as follows: Sl next 7 sts purlwise onto rh needle, dropping extra wraps. Return elongated sts to lh needle.

K into all 7 sts as one (k7tog) but don't allow sts to drop off lh needle. K into back loop of all 7 sts (k7togtbl), again, keeping all 7 sts on lh needle. [K7tog, k7togtbl] 3 times, k7tog and allow 7 sts on lh needle to drop off. 9 sts on rh needle.

Stitch 94 – Bell stitch

Agreed. Row 7 of motif should read p2tog.

78 - cluster flowers



Key

- cell from 3 - cluster 9
- white
- RS: left
- WS: pull
- RS: yo
- WS: yo
- RS: grey no stitch
- WS: grey no stitch
- RS: 3:2tog
- WS: p2tog
- RS: 4:1, 1:1, p2sso
- WS: 4:1, 1:1, p2sso
- RS: 5:1, 1:1, p2sso
- WS: 5:1, 1:1, p2sso
- pattern repeat
- preparatory row - work once only
- border default name

The following stitches have also been amended/clarified:

- Stitch 23 Assymmetric Cable

Row 6: ~~*k4,~~ *1/1RPT, 1/1 LT; rep from * to last 4 sts, k4.

Row 12: ~~*k4,~~ *1/1 LT, 1/1 RPT; rep from * to last **4 sts** ~~st,~~ k4.

- Stitch 54 - Flame Chevron

Row 1 (RS): P **to last st, pfb.**

Row 2: k1, *ssk, k5, yo; rep from * to ~~last st, k1~~ **last 2 sts, ssk.**

Row 13: **Pfb**, p to end.

Row 14: **K2tog**, ~~k1~~ *yo, k5, k2tog; rep from * to last st, k1.

- Stitch 63 Vine Lace

Row 13: K2, *k2, k2tog, [~~k1tbl~~, p1]...

- Stitch 77 Diamond Bobble

Chart Row 5: should show p, k, p, k.

- Stitch 81 Oyster Stitch

Row 3: K1, *~~[os5] five times,~~ k1; rep from * to end.

Row 4: *~~k1 p1,~~ [k1....], to last st, **k1 p1.**

Row 7: K4, *~~[os5] five times,~~ k1; rep from * to last 3 sts, k3.

Row 8: P3, *~~p1 k1,~~ [k1....]

- Stitch 132 Stockinette Smocking

Row 3: K1, *k3, CL3; rep from * to last **st**, k1.

Row 7: K1, *CL3, k3; rep from * to last **st**, k1

- Stitch 134 Shower stitch (notes)

'The yos between repeats in Row 5 effectively form a double yo (as in Row ~~1~~ **2**). When working Row 6, the ~~p1~~ **k1** at start of repeat and ~~k1~~ **p1** at end of repeat are worked into the double yo (as in Row ~~1~~ **2**).'

- Stitch 139 Vertical Drop Stitch

Abbreviation

'D6: Drop down 6 rows. Allow next st (a knit) to drop off the LH needle, and unravel it for 6 rows, **until it reaches the yo**, so that there are 6 "ladder rungs" above it. ~~Put LH needle into that st from front to back, and knit through that st.~~ After you complete the st, you'll see that all of the "ladder rungs" are also caught up in the st, creating the lifted appearance. **Continue to follow pattern as set.'**

- Stitch 159 Reverse Wrapped Rib Stitch

Multiple of 9 sts plus 8

Row 1 (RS): * p1, k2, p2, k2, p1, k1; rep from * to last 8 sts, p1, k2, p2, k2, p1.

Row 2: k1, p2, k2, p2, k1, *p1, k1, p2, k2, p2, k1; rep from * to end.

Row 3: * p1, sl1 x 2, p2, sl1 x 2, p1, k1; rep from * to last 8 sts, p1, [sl1 wyif] twice, p2, [sl1] twice, p1.

Row 4: k1, p2, k2, p2, k1, * p1, k1, p2, k2, p2, k1; rep from * to end .

- Stitch 200 Two-color Brioche Rib.

Initially we were hoping to have brioche as a specific technique but we ran out of space so I've simplified the instructions which will hopefully make it easier to follow:

Multiple 2 sts plus 3

Cast on in colour A.

RS Row 1: In colour A, p1 *yf sl1yo, p1; rep from * to end. Do not turn work but slide sts to opposite end of needle and work a second RS row.

RS Row 2: In colour B, sl1, *brk, yf sl1yo; rep from * to last 2 sts, brk, sl1. Turn work.

WS Row 3: In colour A, k1, yf sl1yo, *brk, yf sl1yo; rep from * to last st, k1. Do not turn work but slide sts to opposite end of needle and work a second WS row.

WS Row 4: In colour B, sl1, brp, *yf sl1yo, brp; rep from * to last st, sl1. Turn work.

RS Row 5: In colour A, p1, *yf sl1yo, brp; rep from * to last 2 sts, yf sl1yo, p1.

Repeat rows 2-5.

Final row: in the final repeat, work rows 2–4 as above and then work the final row as: p1, *p1, brp; rep from * to last 2 sts, p2.

(Note: The chart for this pattern has also been updated – see separate document for chart and see below for written update).

Chart changes:

Delete first and last st on each row in the chart. (Overall chart width becomes 35 sts not 37).

Row numbering should be:

1 on rh side

2 on rh side

3 on lh side

4 on lh side

5 on rh side

Symbols:

1st and last st on (ws) row 3 should be knit (symbol ●).

1st st on (ws) row 4 (counting from lh edge) should be a V with a ● in (representing sl1 on ws row).

P. 180

Non-matching gauge

‘There are occasions when it is not possible to match both the number of rows and the number of stitches simultaneously. With one set of needles your rows are correct but you have too few stitches. However, when you go ~~up~~ **down** a needle size, the stitch numbers are correct, but there are too few rows.’

P. 187

Symbols and Abbreviations

Mir ~~±~~ **7**: Motif insert Row 7. Work the relevant row from the motif chart.

P. 187

Symbols and Abbreviations

Lsb: Loop stitch back (loops to back of work). Insert LH needle in st and wind yarn around needle as if to knit (~~below~~). Wind yarn around LH index finger. For a short loop wind once; to lengthen the loop, wind twice. Take yarn back around RH needle as if to knit (again) and form the st. ~~It will be two or three strands wide, depending on how many times you have wound the yarn around your finger.~~ To secure the loop, bring the working yarn between the needles to the front of the work and then over the needles, like a yo. Hold yo securely in place and bind off st over yo. This will secure the loop.

P. 152

Stitch 224 Persian Rug

Revised chart – see below.

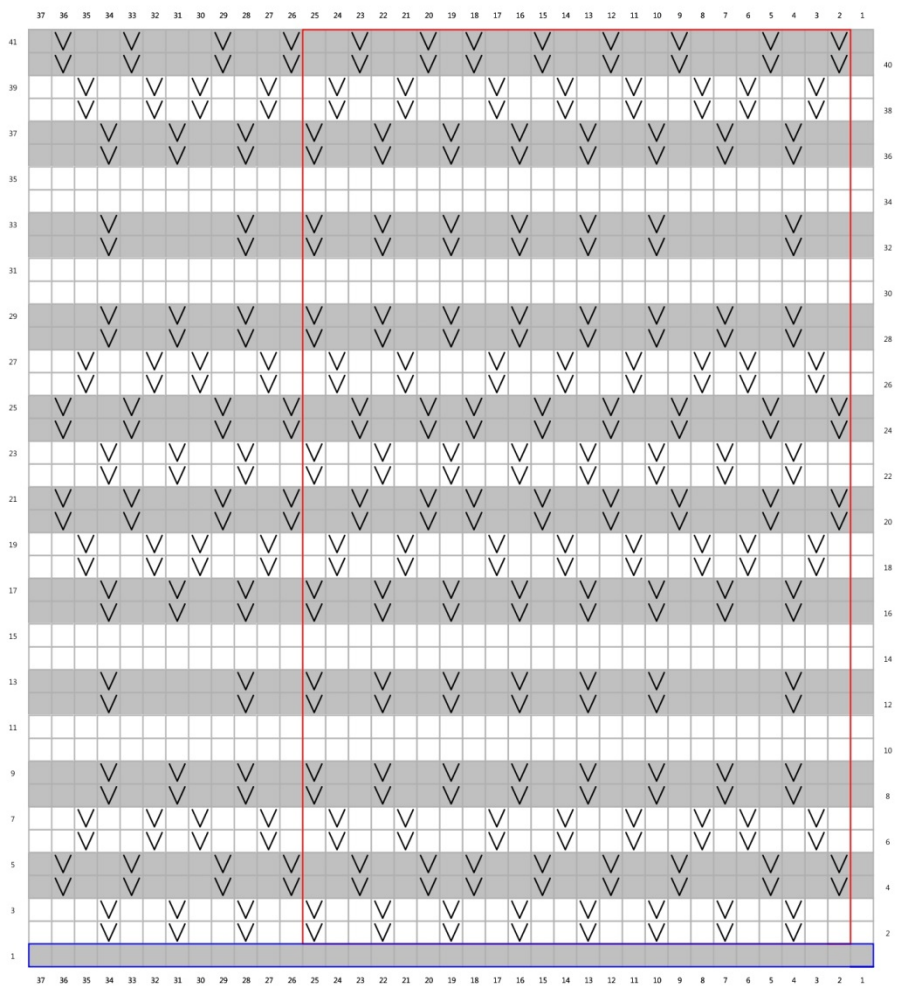
P. 153

Stitch 225 Single 4-stitch Cable

Swatch is upside down. Cables on right of image show left-twist cable, cables on left are right-twist cables. Charts are correct.

Persian Rug chart

215 - persian rug (multiple of 24 sts plus 13)



Key

- light grey
- RS: knit
WS: purl
- RS: slip
WS: slip purlwise with yarn in front
- RS: purl
WS: knit
- 24 sts repeat
- preparatory row - work once only